

October 28th, 2019

Anglophone South School District
490 Woodward Avenue
Saint John, N.B. E2K 5N3



Attention:
Jamie Tait – Transportation Manager
Steve Evans – Assistant Transportation Manager
Jim Connors – Facilities Manager
John MacDonald – Director of Finance and Administration
Honorable Bill Oliver – MLA and Minister of Transportation

RE: Safe Access for Pedestrians to Inglewood School

We wish to advise of serious concerns for the safety of child pedestrians walking to and from Inglewood School along School Street in Grand Bay - Westfield, N.B. We understand that School Street is owned by ASD-S and not the Town of Grand Bay – Westfield, and therefore we are writing to you in the hope that our concern(s) can be addressed.

Current Situation at Inglewood

The access to Inglewood School along School Street is a narrow two-way street, with 4 residential driveways. This street has no sidewalks and is bordered by a ditch running down the northern side of the street.



In the morning between 7:45 – 8:20 am, approximately 35-40 cars as well as two school buses drop off students. We have individual students who are walkers, as well as a larger group who walks over from Tiny Treasures Learning Centre located 77 Woolastook Drive.

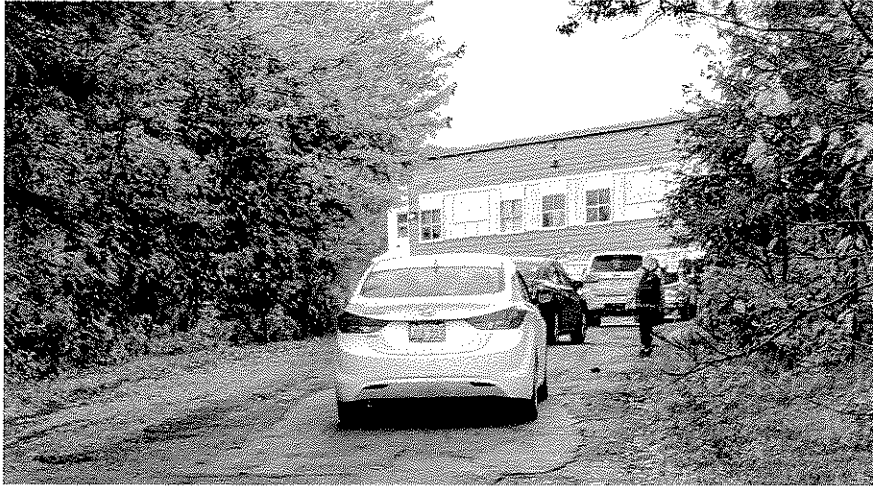


Figure 1: Student walking to school at 7:50 AM.

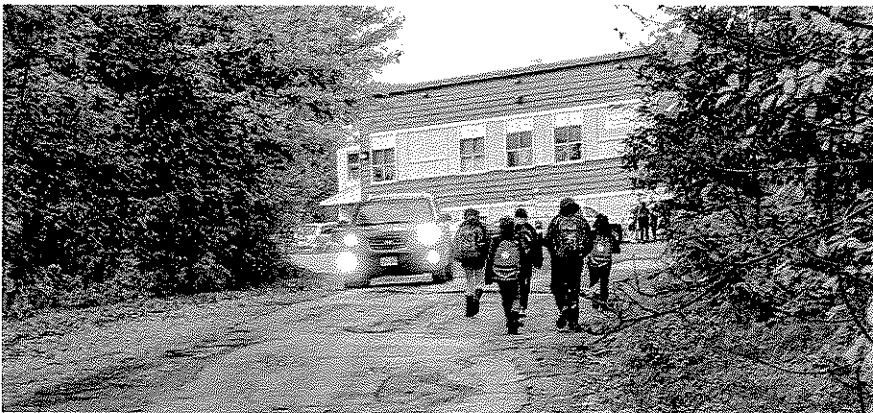


Figure 2: Students from Tiny Treasures walking to school at 7:55 AM. Note they must walk with the traffic due to obstructed visibility on the other side of the road.

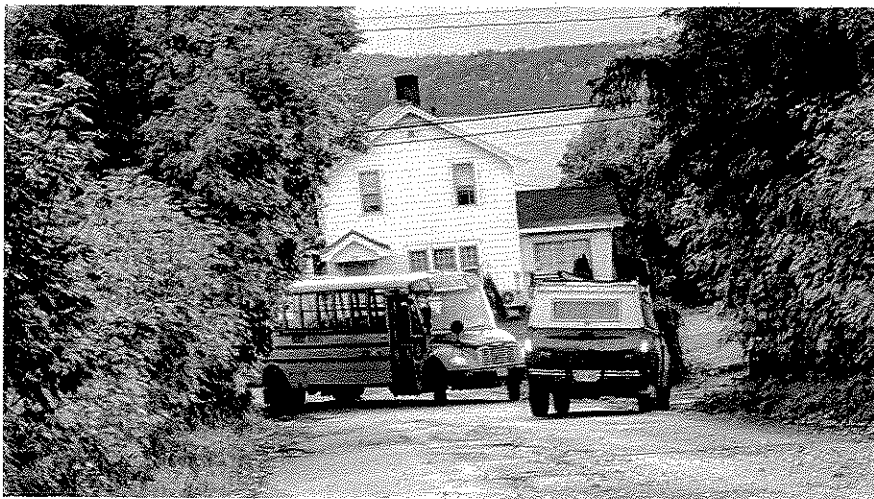


Figure 3: School bus turning right onto School St. from Woolastook Drive at 8:10 AM, as another vehicle tries to exit.

Another concern arises when we discuss afterschool pickup. There are more students who are picked up by parents after school or who walk to Tiny Treasures Learning Center. After school, School Street is lined up with cars from the school parking lot almost back to Woolastook Drive. This forces students who are walking to travel on the 'ditch' side of the street, and to navigate (4) around students who are getting into cars, and (5) walk very close to cars who are moving towards the school parking lot to turn around.



Figure 4: Bus arriving at 2:38 pm. Note cars parked on both sides of the streets with minimal space in between for bus to enter and exit school parking lot.



Figure 5: After buses have departed, students who are walkers or who get picked up are dismissed. Note students walking between parked cars and ditch, as well as down middle of street.



Figure 6: Students walking in middle of street with large truck approaching them from behind.



Figure 7: Two-way traffic as cars enter and leave school parking lot. Note minimal amount of space for vehicles to pass by each other and students traveling along ditch on left side.

Best Practices for Child Pedestrians

Pedestrian injuries continue to be the leading cause of death among Atlantic Canadian children aged 14 years or younger, and children remain at highest risk for pedestrian related injuries.¹ On average, every year in Canada 30 child pedestrians younger than 14 years are killed, and 2412 are injured.³

Children’s overall physical, cognitive, visual and auditory development puts them at a distinct disadvantage as pedestrians. The vision and hearing of children less than 11 years of age is generally not yet fully developed. School-aged children are often self-absorbed, a normal state for children but as a result, they find it hard to believe that a driver would not be aware of them.³

There are also other infrastructure-related risk factors that contribute to the high number of child pedestrian injuries, two of which are clearly present at Inglewood School (as illustrated by the above pictures): a lack of and/or poor condition of sidewalks (i.e. are they continuous, on both sides of the street, in safe condition, etc.), and pedestrian proximity to traffic.²

In addition to the above, Inglewood School’s student population is growing and will continue to do so. These risk factors become an even greater concern with the addition of more students to the already busy car and pedestrian traffic along School Street.

Observed Practices at Other Schools

Based on our observations, the standard for non-rural elementary schools is to have schools connected to streets via raised sidewalks. ASD-S has installed sidewalks at all elementary schools where a public street sidewalk connection point is available. Pictures of other elementary schools within our school district are attached to illustrate that ASD-S has recognized the value of sidewalks in keeping students safe while walking to and from school.

¹ Some data under this section has been cited from Safe Kids Canada documents. Please note Safe Kids Canada is now part of Parachute Canada. Links to these documents and related data can be found under the Parachute Canada website.

² Safe Kids Canada. (2004). “Pedestrian injuries.” *Pedestrian Safety: A Guide for Communities*. 6 – 11.

³ Countermeasures to Improve Pedestrian Safety in Canada (August 2013)| CCMTA.

M Gerald Teed School



Island View School



Loch Lomond Elementary School



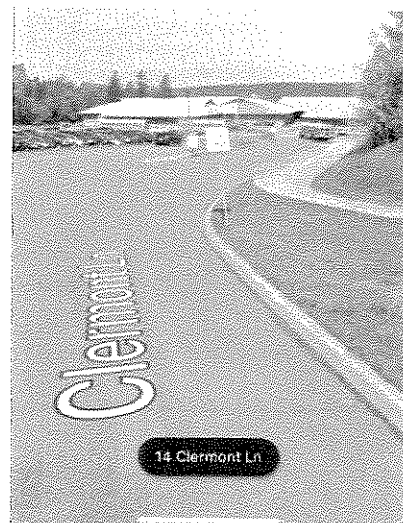
K Park Elementary School



Fairvale Elementary School



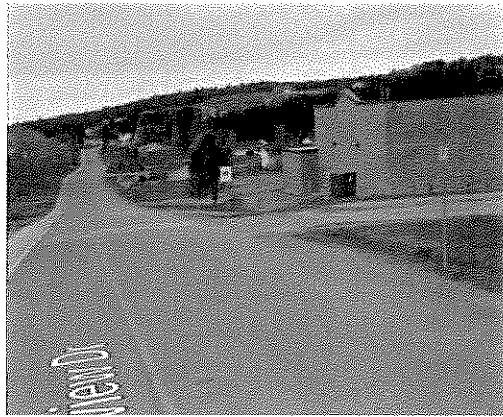
Rothesay Elementary School



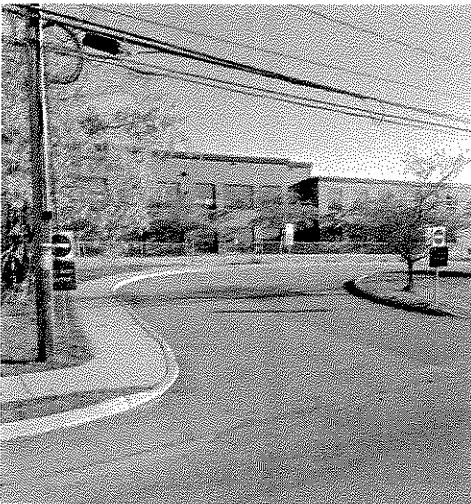
Forest Hills School



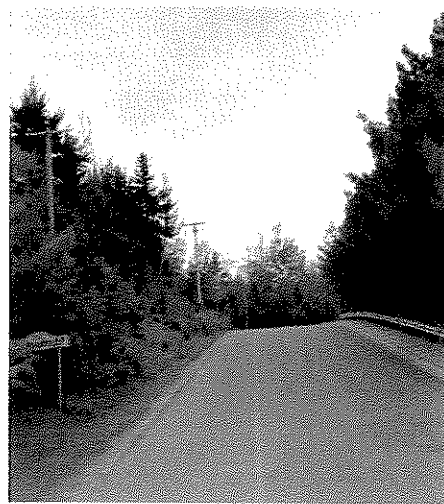
Lakewood Heights Elementary



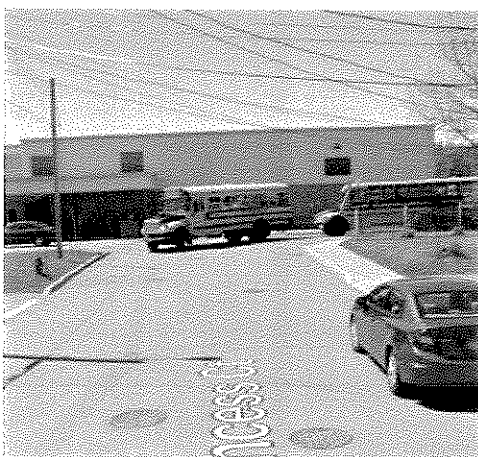
Quispamsis Elementary School



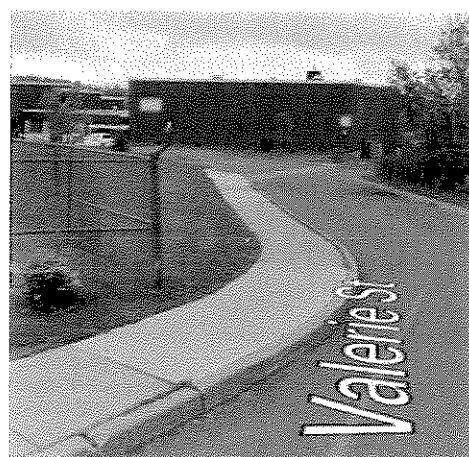
Lakefield Elementary School



Glen Falls School



Centennial School



Given the above noted safety concerns and observed standards, we request that the following actions be completed and implemented by **November 29th, 2019** for the immediate protection of all students currently attending Inglewood School:

- Post a speed limit of 15 km/hour along School Street.
- Implement a policy that prohibits parking on *both* sides of School Street, and post 'No Stopping' signs where parking is no longer permitted.
- Paint a line along School Street to create a defined walking area for students.

In addition to the above, we strongly advocate that School Street be widened and that a raised sidewalk be installed prior to **September 1st, 2020** in preparation for the coming 2020-2021 academic year.

To compliment the work undertaken by ASD-S, we are also exploring options that we can implement at the school level, including moving the student drop off / pickup point, and completing a 'Pedestrian Safety Awareness' campaign with our students.

We are available to discuss our concerns with you as soon as possible and can be reached at amanda.hamm@bellaliant.ca or 506.333.1010. We know that the safety of our students is everyone's concern and would very much appreciate your support in this matter.

Best Regards,



Amanda Hamm
Chair - Parent School Support Committee
Inglewood School

CC to:
Town of Grand Bay – Westfield
Superintendent Zoe Watson
District Education Council
Parents of Inglewood students